

SPOT SLED15000 BRANCA LED 7W 2700K 80



Luminária spot para trilho com fecho de abertura de

Fluxo luminoso – 480 lm/m

Potência – 7,1 W/m

Intensidade pico – 1259cd

CCT – 2667K



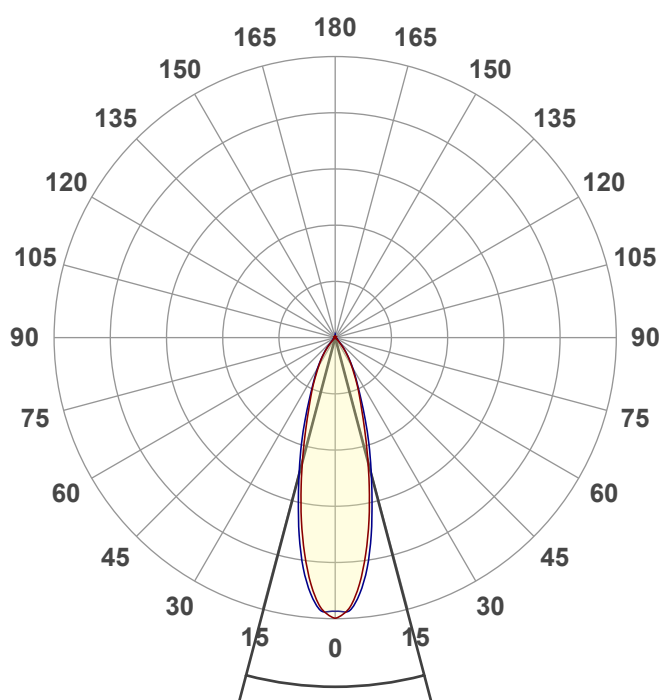
IRC – 81,7

Coordenada CIE 1931 – x- 0,458 y- 0,403

30°. Corpo em alumínio injetado com acabamento na cor branca e anti ofuscante em plástico injetado com acabamento na cor preta. Lente em acrílico injetado . Indicado para iluminação de destaque etc.

Data do ensaio

23/06/2022 14:49:53



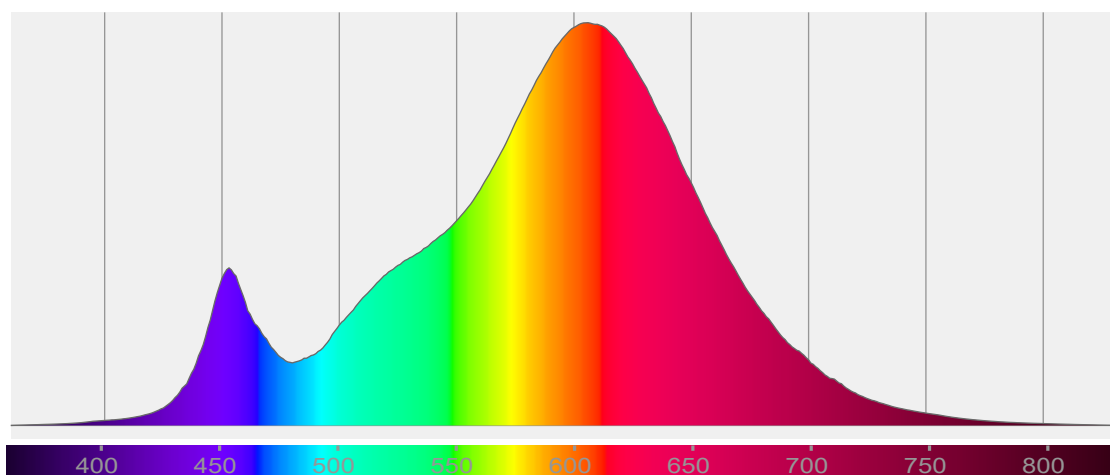
Rf 84,0

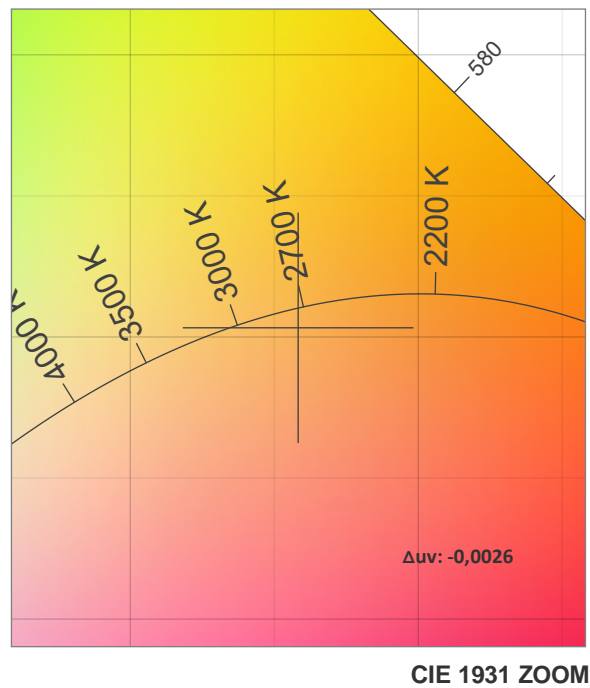
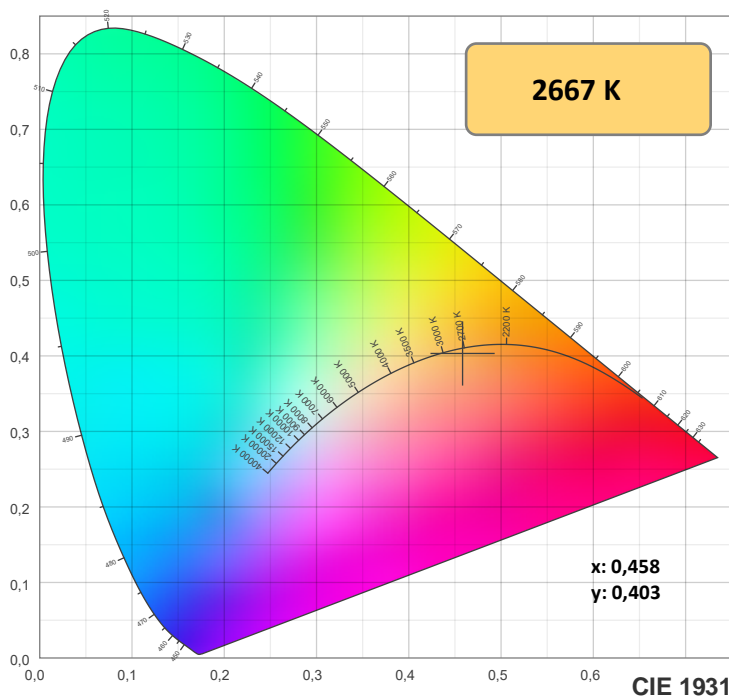
Fidelity index Rf

Rg 96,8

Gamut index Rg

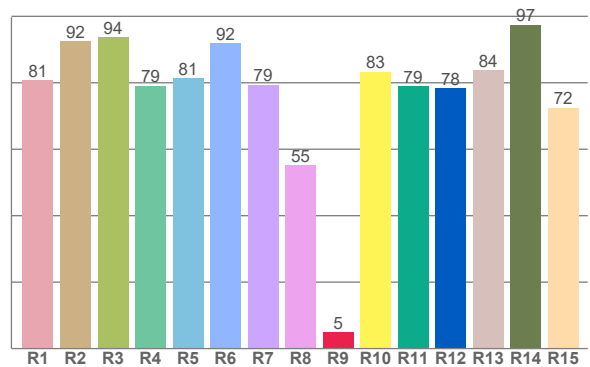
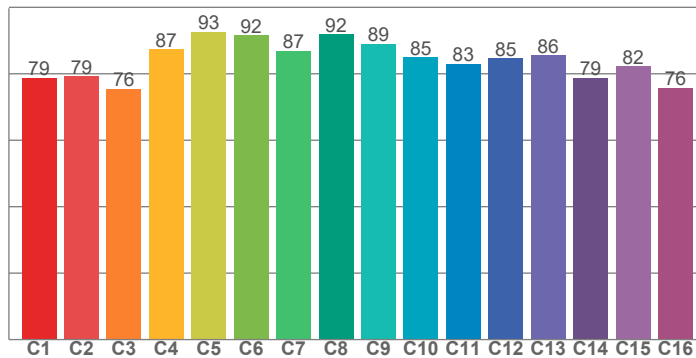
Hue Bin	R _f	Shifts (%)	
		Chroma	Hue
1	79	-12%	0%
2	79	-8%	8%
3	76	-2%	13%
4	87	2%	7%
5	93	5%	4%
6	92	5%	-2%
7	87	-1%	-8%
8	92	-4%	-3%
9	89	-6%	2%
10	85	-4%	9%
11	83	0%	12%
12	85	7%	2%
13	86	6%	-9%
14	79	5%	-17%
15	82	-3%	-11%
16	76	-10%	-16%





TM-30: 84,0

CRI: 81,7 (R1-R8)



CRIRA R1-R8 / CRIR R1-R15

R1	R2	R3	R4	R5	R6	R7	R8	R9	R10	R11	R12	R13	R14	R15
80,9	92,5	93,8	79,1	81,3	91,9	79,4	55,1	4,9	83,3	78,9	78,3	83,8	97,5	72,4

TM30 valores C. 16 valores extraídos dos 99.

C1	C2	C3	C4	C5	C6	C7	C8	C9	C10	C11	C12	C13	C14	C15	C16
78,8	79,2	75,5	87,4	92,6	91,6	86,9	91,9	88,9	84,9	83,0	84,6	85,6	78,8	82,2	75,8

Parametros de cor

Temperatura de cor	Índice de reprodução de cor	Reprodução de cor vermelho R9	Color fidelity	Color gamut	Color quality scale	Coordenada de cor cie 1931	Coordenada de cor cie 1931	Coordenada de cor	Coordenada de cor	Color deviation from black body
CCT	IRC	CRI R9	TM30 Rf	TM30 Rg	CQS	x	y	u	v	Δuv
2667 K	81,7	4,9	84,0	96,8	80,4	0,458	0,403	0,265	0,350	-0,0026

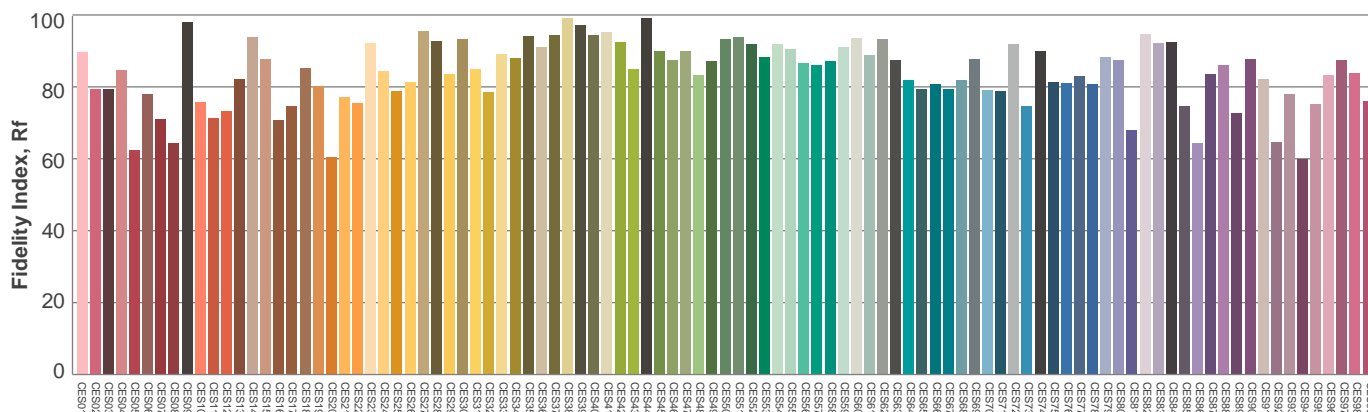
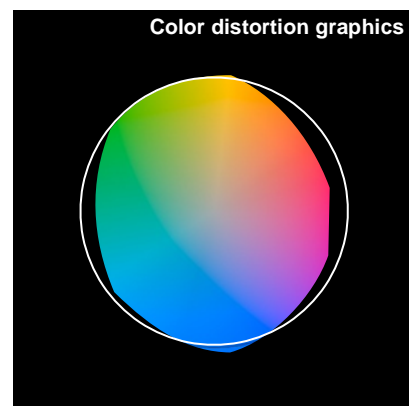
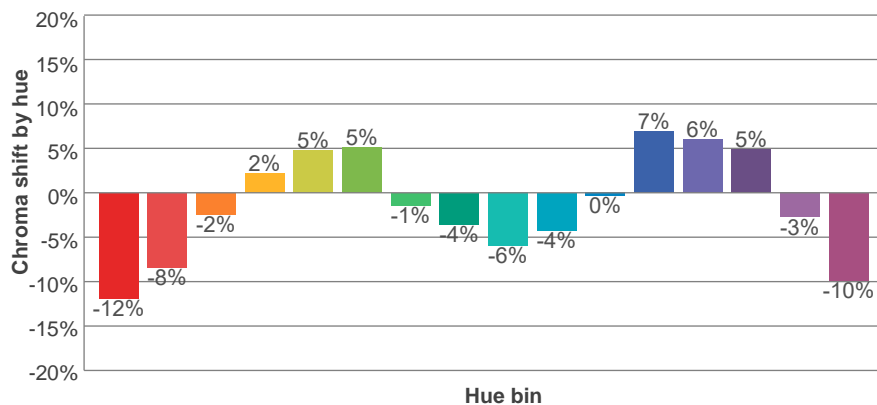
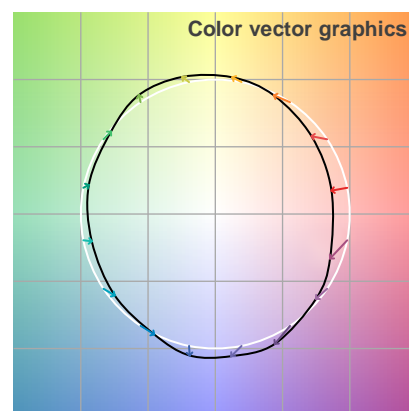
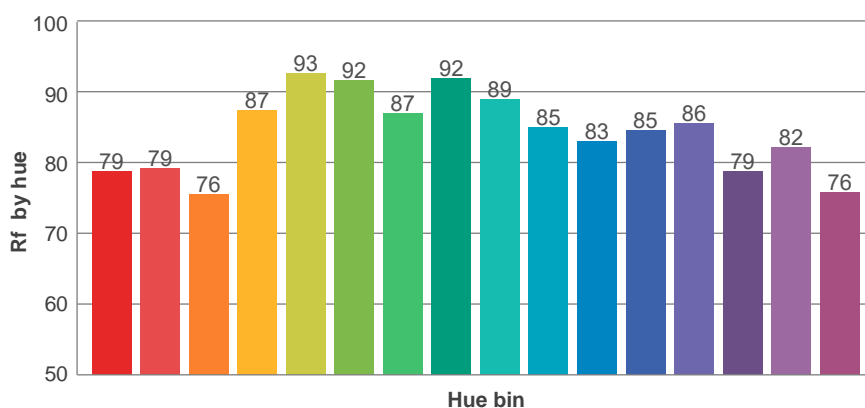
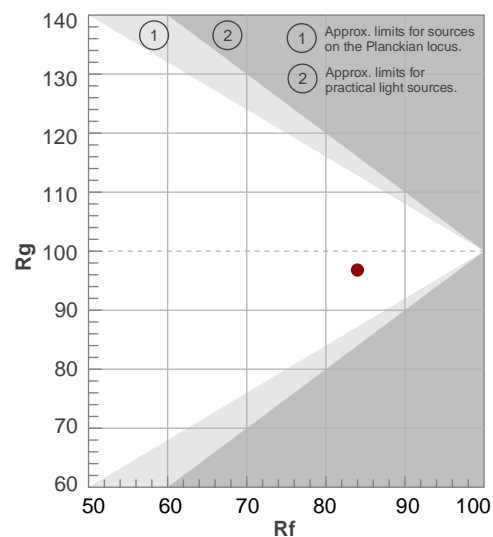
Rf 84,0

Fidelity index Rf

Rg 96,8

Gamut index Rg

Hue Bin	R _f	Shifts (%)	
		Chroma	Hue
1	79	-12%	0%
2	79	-8%	8%
3	76	-2%	13%
4	87	2%	7%
5	93	5%	4%
6	92	5%	-2%
7	87	-1%	-8%
8	92	-4%	-3%
9	89	-6%	2%
10	85	-4%	9%
11	83	0%	12%
12	85	7%	2%
13	86	6%	-9%
14	79	5%	-17%
15	82	-3%	-11%
16	76	-10%	-16%



Avaliação todas as amostras de cores

Glare Evaluation According to UGR

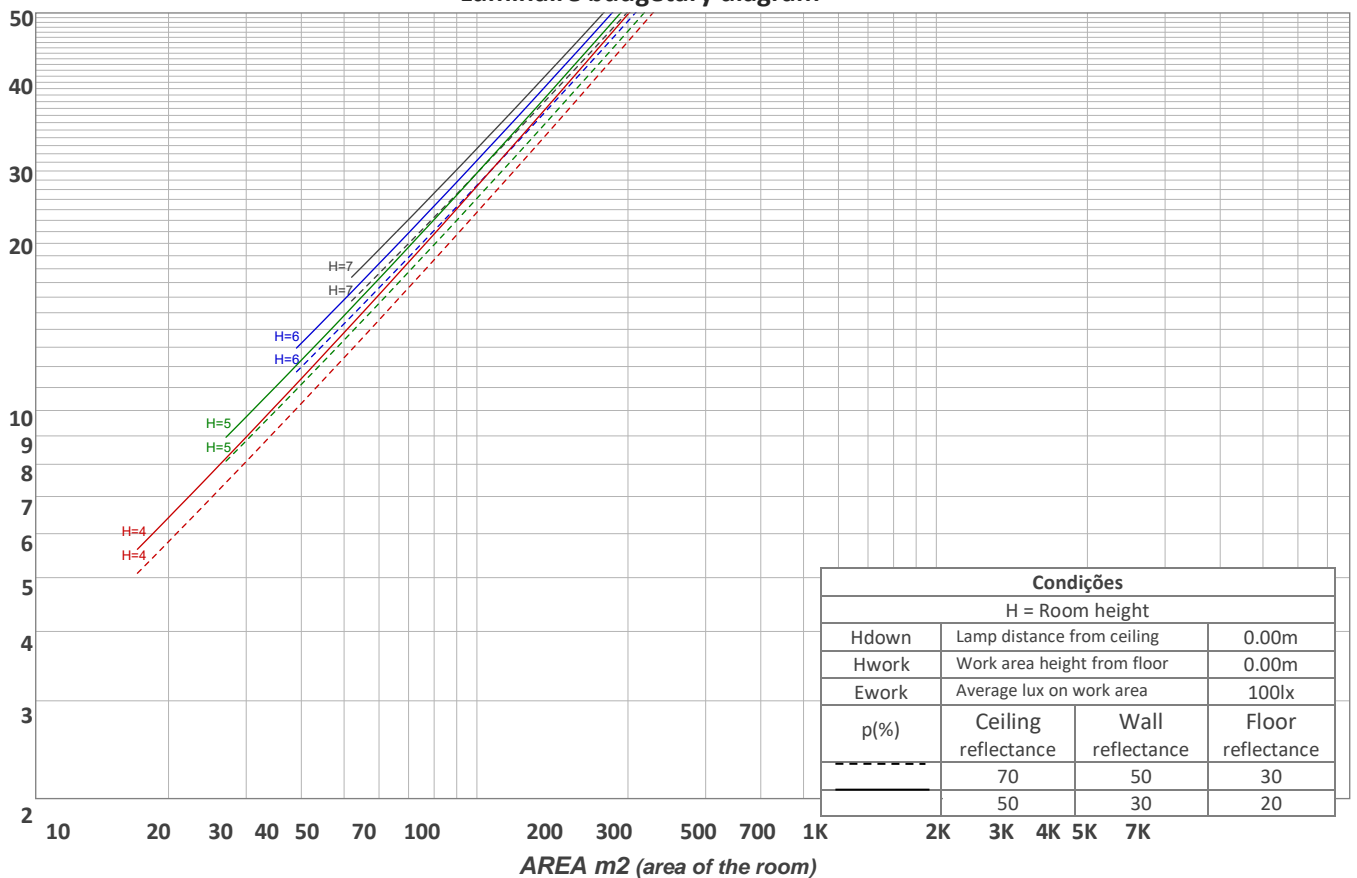
p Ceiling		70	70	50	50	30	70	70	50	50	30
p Walls		50	30	50	30	30	50	30	50	30	30
p Floor		20	20	20	20	20	20	20	20	20	20
Room size X Y		Viewing direction at right angles to lamp axis					Viewing direction parallel to lamp axis				
2H	2H	16,7	17,2	16,8	17,4	17,7	17,3	17,8	17,4	18,0	18,2
	3H	16,4	17,1	16,8	17,3	17,5	17,0	17,6	17,4	17,9	18,1
	4H	16,3	17,0	16,8	17,2	17,5	16,9	17,6	17,3	17,8	18,1
	6H	16,4	16,9	16,7	17,3	17,6	17,0	17,5	17,3	17,8	18,2
	8H	16,4	16,9	16,7	17,3	17,7	16,9	17,5	17,3	17,8	18,2
	12H	16,4	16,9	16,8	17,3	17,8	16,9	17,5	17,3	17,8	18,3
4H	2H	16,3	17,0	16,7	17,2	17,5	16,9	17,6	17,3	17,8	18,1
	3H	16,2	16,8	16,6	17,1	17,6	16,8	17,3	17,2	17,7	18,1
	4H	16,1	16,6	16,6	17,1	17,6	16,7	17,2	17,2	17,6	18,2
	6H	16,2	16,7	16,7	17,0	17,4	16,7	17,2	17,2	17,6	18,0
	8H	16,2	16,7	16,8	17,1	17,5	16,7	17,2	17,3	17,6	17,9
	12H	16,3	16,7	16,8	17,1	17,6	16,8	17,1	17,3	17,6	18,0
8H	4H	16,0	16,5	16,6	16,9	17,3	16,6	17,1	17,1	17,4	17,8
	6H	16,1	16,4	16,7	16,9	17,5	16,7	17,0	17,2	17,4	18,0
	8H	16,3	16,6	16,9	17,1	17,8	16,8	17,0	17,3	17,5	18,2
	12H	16,5	16,7	17,1	17,3	17,9	16,9	17,1	17,5	17,6	18,2
12H	4H	16,0	16,3	16,5	16,8	17,3	16,5	16,9	17,1	17,3	17,8
	6H	16,2	16,4	16,7	17,0	17,6	16,7	16,9	17,2	17,5	18,1
	8H	16,3	16,5	16,9	17,1	17,7	16,7	16,9	17,4	17,5	18,1
Variation of the observer position for the luminaire distance S											
S = 1.0H		4,0 / -3,8					4,0 / -4,7				
S = 1.5H		6,5 / -4,4					6,5 / -5,3				
S = 2.0H		8,4 / -4,7					8,5 / -5,8				
Standard table		n/a					n/a				
Correction summand		n/a					n/a				
Corrected glare indices referring to 480 lm total luminous flux											

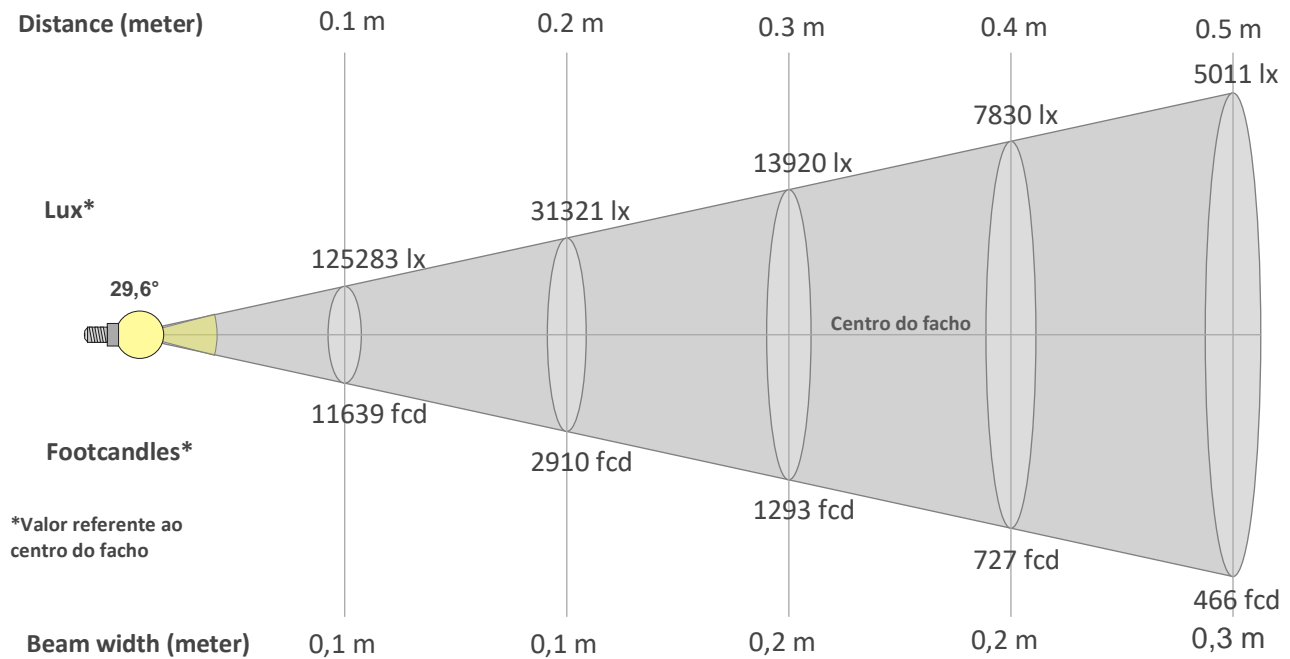
Coeficiente de utilização

Ceiling reflectance	80				70				50			30			10			0
Wall reflectance	70	50	30	10	70	50	30	10	50	30	10	50	30	10	50	30	10	0
Floor reflectance	20	20	20	20	20	20	20	20	20	20	20	20	20	20	20	20	20	0
RCR	(RCR: Room Cavity Ratio) Room Values are expressed as percentage of Lumens delivered to the task surface																	
0	119	119	119	119	116	116	116	116	110	110	110	105	105	105	101	101	101	98
1	114	111	109	107	111	109	107	105	105	103	101	101	99	98	97	96	95	93
2	109	104	101	98	107	103	99	97	99	96	94	96	94	92	93	91	90	88
3	104	98	94	91	102	97	93	90	94	91	88	92	89	87	89	87	85	84
4	100	93	88	85	98	92	87	84	90	86	83	88	84	82	86	83	81	79
5	96	88	83	79	94	87	83	79	85	81	78	84	80	77	82	79	77	75
6	92	84	79	75	90	83	78	75	82	77	74	80	76	74	79	76	73	72
7	88	80	75	71	87	79	74	71	78	74	71	77	73	70	76	72	70	68
8	85	77	71	68	84	76	71	68	75	70	67	74	70	67	73	69	67	65
9	82	73	68	65	81	73	68	65	72	67	64	71	67	64	70	66	64	63
10	79	70	65	62	78	70	65	62	69	65	62	68	64	61	67	64	61	60

Quantidade de luminárias

Luminaire budgetary diagram





Beam intensities from 1-20m

1m	2m	3m	4m	5m	6m	7m	8m	9m	10m	11m	12m	13m	14m	15m	16m	17m	18m	19m	20m
3,3ft	6,6ft	9,8ft	13,1ft	16,4ft	19,7ft	23ft	26,2ft	29,5ft	32,8ft	36,1ft	39,4ft	42,7ft	45,9ft	49,2ft	52,5ft	55,8ft	59,1ft	62,3ft	65,6ft
1253lx	313lx	139lx	78lx	50lx	35lx	26lx	20lx	15lx	13lx	10lx	9lx	7lx	6lx	6lx	5lx	4lx	4lx	3lx	3lx
116,4fcd	29,1fcd	12,9fcd	7,3fcd	4,7fcd	3,2fcd	2,4fcd	1,8fcd	1,4fcd	1,2fcd	1fcd	0,8fcd	0,7fcd	0,6fcd	0,5fcd	0,5fcd	0,4fcd	0,4fcd	0,3fcd	0,3fcd

Intensities in 0° c-plane

0°	2°	4°	6°	8°	10°	12°	14°	16°	18°	20°	22°	24°	26°	28°	30°	32°	34°	36°	38°
1253	1231	1176	1090	982	862	739	622	516	425	352	298	253	213	177	148	125	102	80	60
100%	98%	94%	87%	78%	69%	59%	50%	41%	34%	28%	24%	20%	17%	14%	12%	10%	8%	6%	5%

Intensities in 90° c-plane

0°	2°	4°	6°	8°	10°	12°	14°	16°	18°	20°	22°	24°	26°	28°	30°	32°	34°	36°	38°
1253	1227	1198	1130	1038	920	796	679	576	483	397	325	268	223	188	158	130	106	85	66
100%	98%	96%	90%	83%	73%	64%	54%	46%	39%	32%	26%	21%	18%	15%	13%	10%	8%	7%	5%

Intensities in 180° c-plane

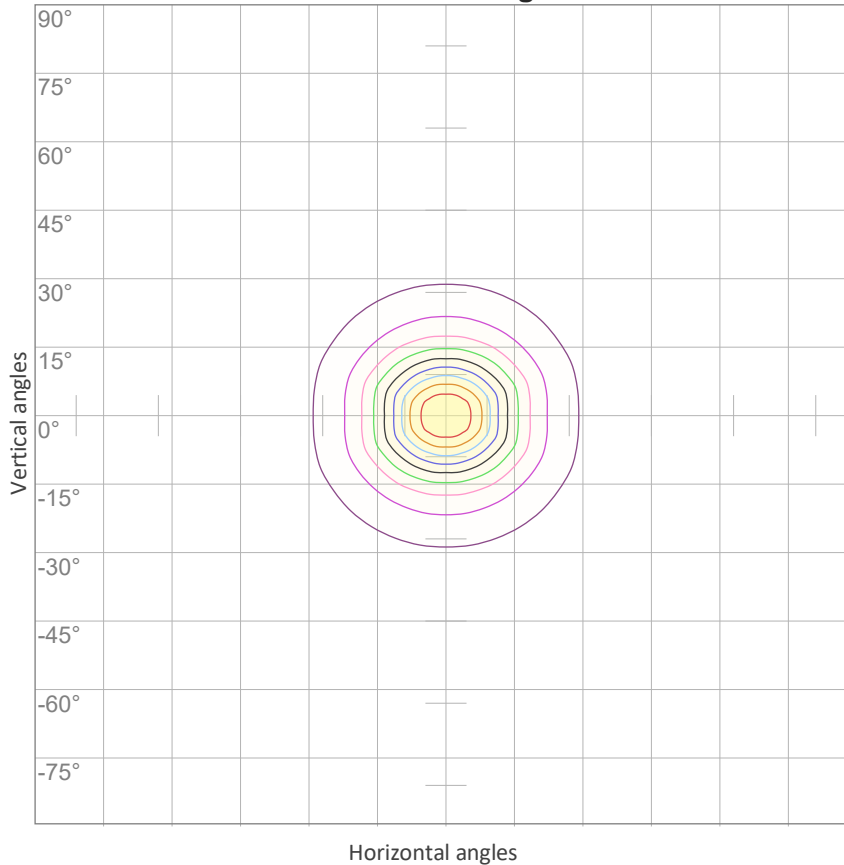
0°	2°	4°	6°	8°	10°	12°	14°	16°	18°	20°	22°	24°	26°	28°	30°	32°	34°	36°	38°
1253	1231	1176	1090	982	862	739	622	516	425	352	298	253	213	177	148	125	102	80	60
100%	98%	94%	87%	78%	69%	59%	50%	41%	34%	28%	24%	20%	17%	14%	12%	10%	8%	6%	5%

Intensities in 270° c-plane

0°	2°	4°	6°	8°	10°	12°	14°	16°	18°	20°	22°	24°	26°	28°	30°	32°	34°	36°	38°
1253	1227	1198	1130	1038	920	796	679	576	483	397	325	268	223	188	158	130	106	85	66
100%	98%	96%	90%	83%	73%	64%	54%	46%	39%	32%	26%	21%	18%	15%	13%	10%	8%	7%	5%

Beam angle 50%	Field angle 10%	Cutoff angle 2,5%	Intensity ratio in 120° cone	Intensity ratio in 90° cone
29,6°	65,2°	84,9°	97,8%	95,7%

iso-candela diagram



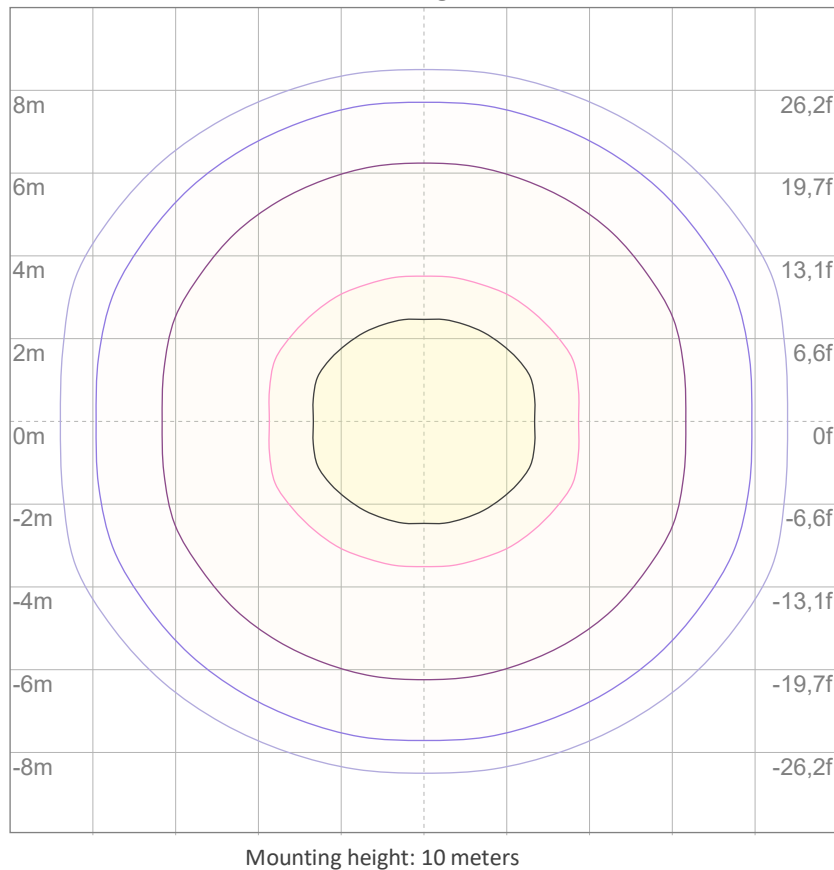
10%	125 cd
20%	251 cd
30%	376 cd
40%	501 cd
50%	626 cd
60%	752 cd
70%	877 cd
80%	1002 cd
90%	1128 cd

Conditions:

Number of c-planes: 16

Candela at center: 1253 cd

iso-lux diagram



3%	0,376 lx
5%	0,626 lx
10%	1,25 lx
30%	3,76 lx
50%	6,26 lx

Conditions:

Number of c-planes: 16

Lux at center: 12,5 lx

Lux distribution on a surface when lamp is mounted at 10 meters from the surface.

Potência



Vttagem: 228 V
Corrente: 0,031 A
Frequência: 0 Hz
FP: 0,44

THD



THD corrente: n/a
THD tensão: n/a