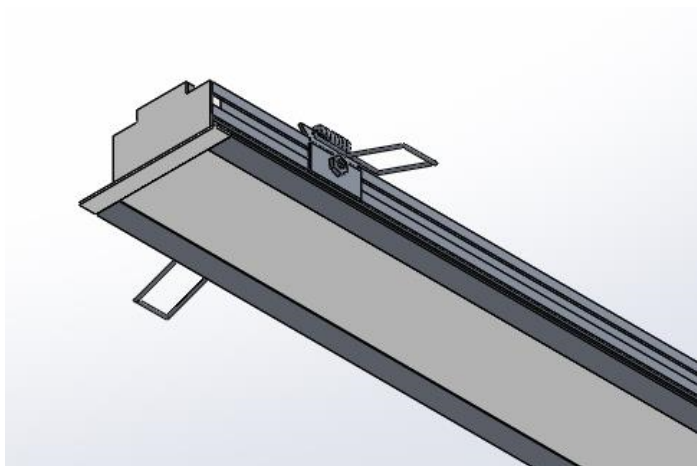


## SLED9106 E46 BARRA M80B 22W 4000K



Fluxo luminoso – 2210 lm

Potência – 21,9 W

Intensidade pico – 884cd

CCT – 4056K

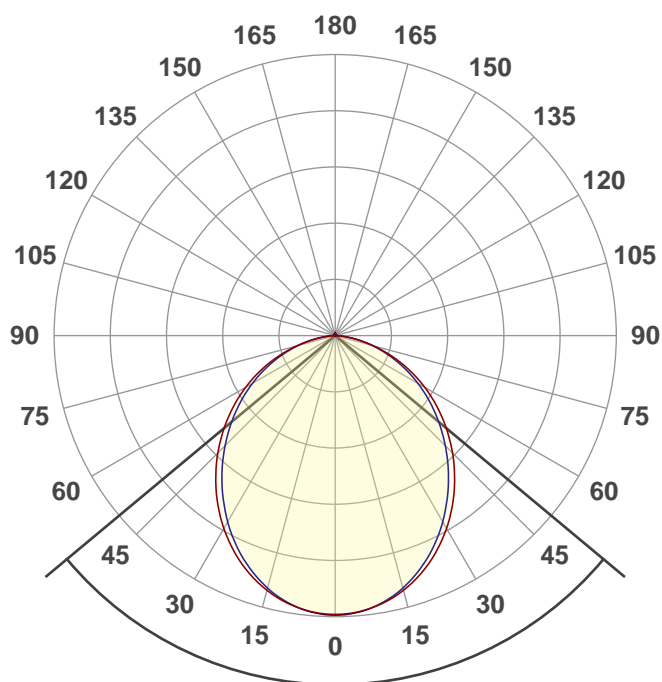


IRC – 82,6

Coordenada CIE 1931 – x- 0,380 y- 0,383

Data do ensaio

17/11/2022 12:00:03



Facho de abertura

**100,4°**

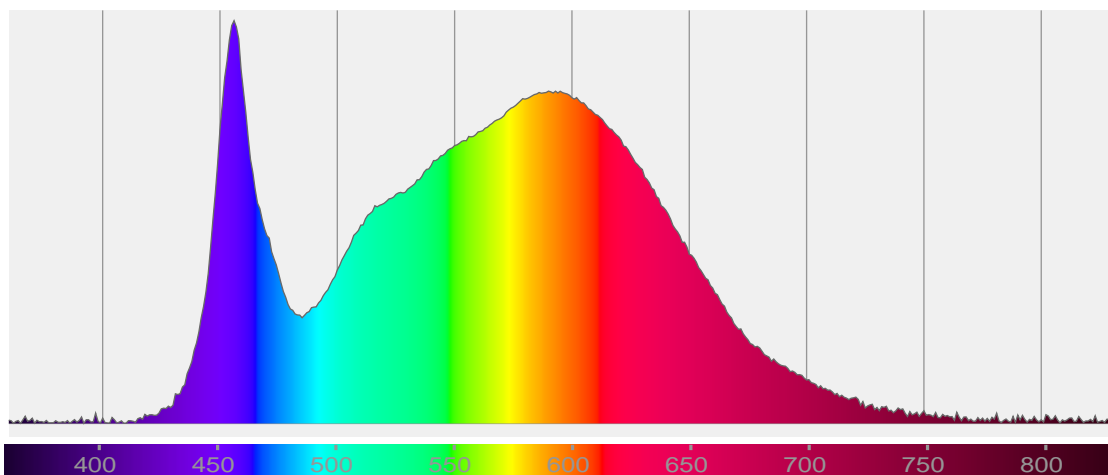
**Rf 82,4**

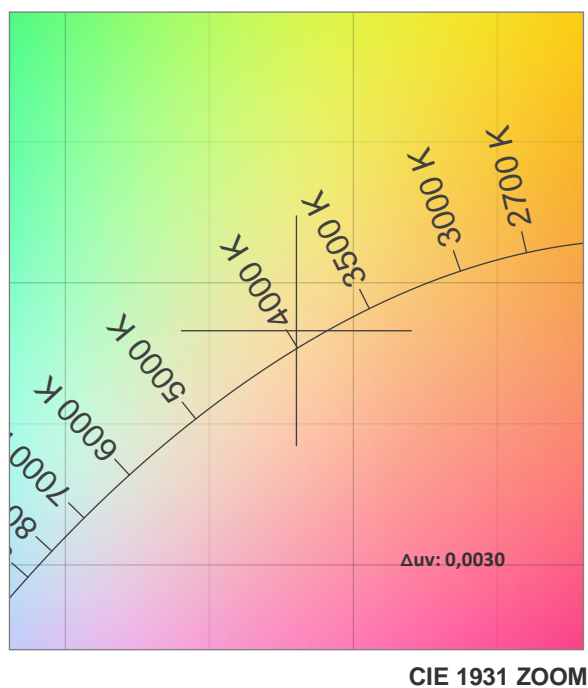
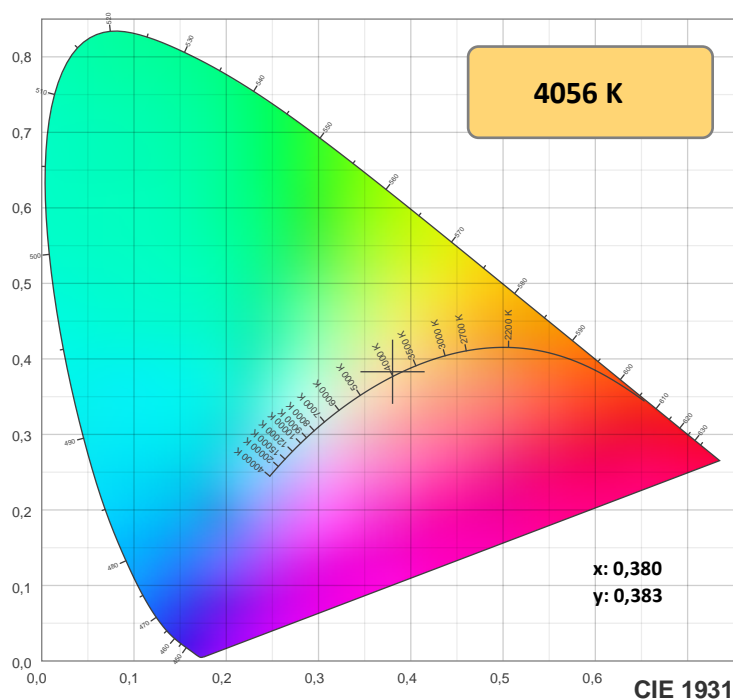
Fidelity index Rf

**Rg 92,2**

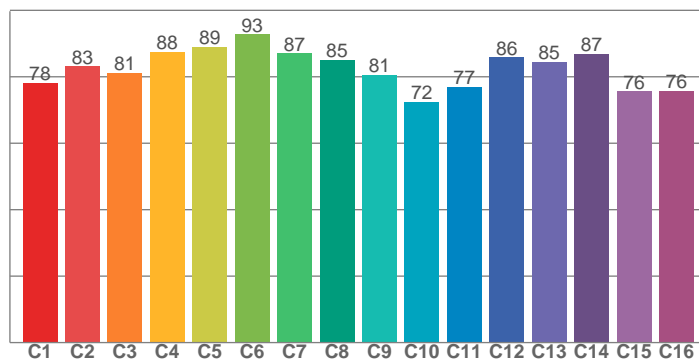
Gamut index Rg

Hue Bin	R <sub>f</sub>	Shifts (%)	
		Chroma	Hue
1	78	-12%	1%
2	83	-7%	5%
3	81	-5%	9%
4	88	-3%	4%
5	89	-5%	2%
6	93	-3%	-2%
7	87	-8%	0%
8	85	-8%	4%
9	81	-7%	12%
10	72	-5%	17%
11	77	5%	15%
12	86	5%	4%
13	85	6%	-9%
14	87	3%	-9%
15	76	-3%	-17%
16	76	-7%	-12%

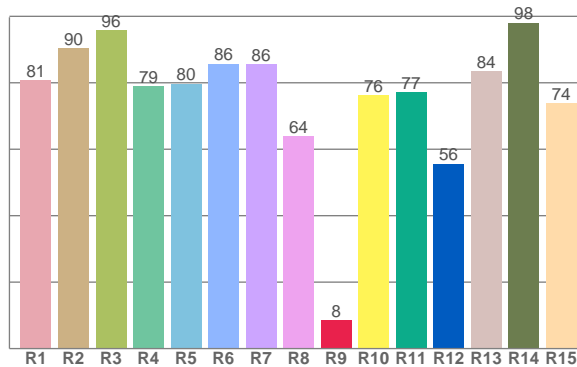




TM-30: 82,4



CRI: 82,6 (R1-R8)



CRiRa R1-R8 / CRlre R1-R15

R1	R2	R3	R4	R5	R6	R7	R8	R9	R10	R11	R12	R13	R14	R15
80,7	90,4	95,9	79,0	79,7	85,7	85,6	64,0	8,5	76,2	77,2	55,6	83,5	98,1	73,9

TM30 valores C. 16 valores extraídos dos 99.

C1	C2	C3	C4	C5	C6	C7	C8	C9	C10	C11	C12	C13	C14	C15	C16
78,1	83,2	81,2	87,5	89,0	92,8	87,0	85,1	80,6	72,4	77,0	85,8	84,6	86,8	75,7	75,8

## Parametros de cor

Temperatura de cor	Índice de reprodução de cor	Reprodução de cor vermelho R9	Color fidelity	Color gamut	Color quality scale	Coordenada de cor cie 1931	Coordenada de cor cie 1931	Coordenada de cor	Coordenada de cor	Color deviation from black body
CCT	IRC	CRI R9	TM30 Rf	TM30 Rg	CQS	x	y	u	v	$\Delta uv$
4056 K	82,6	8,5	82,4	92,2	81,7	0,380	0,383	0,222	0,336	0,0030

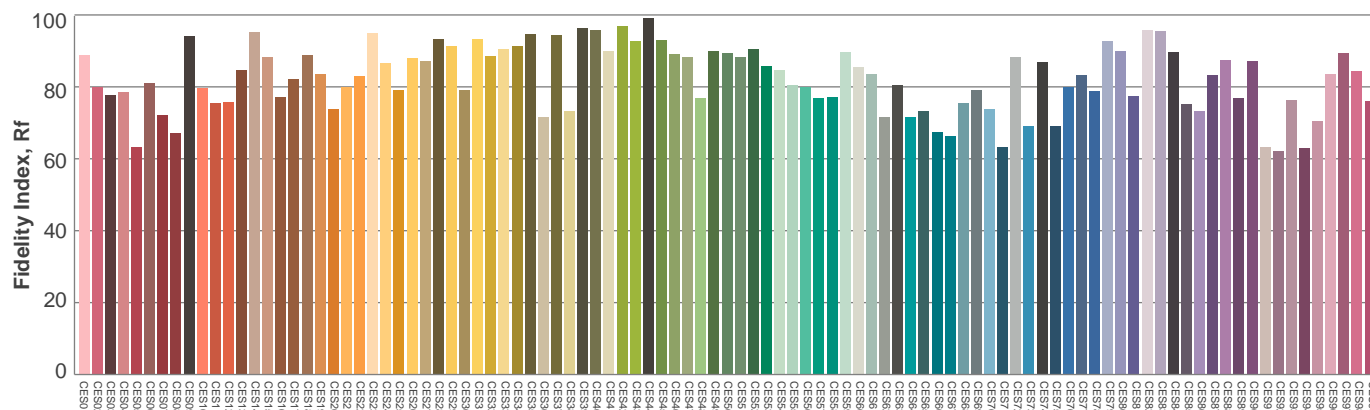
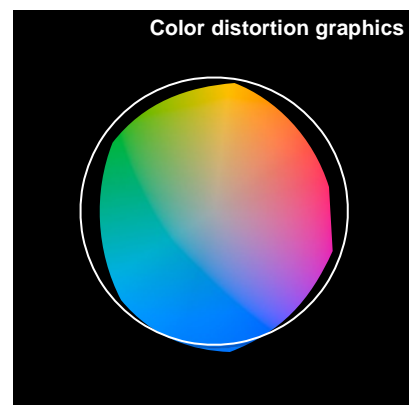
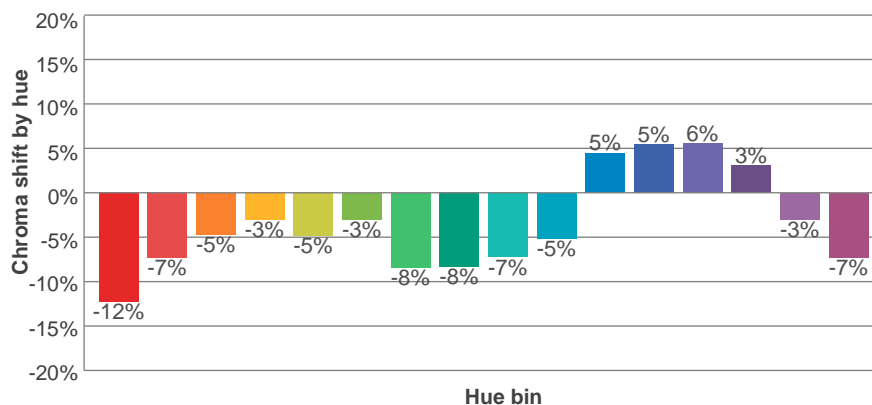
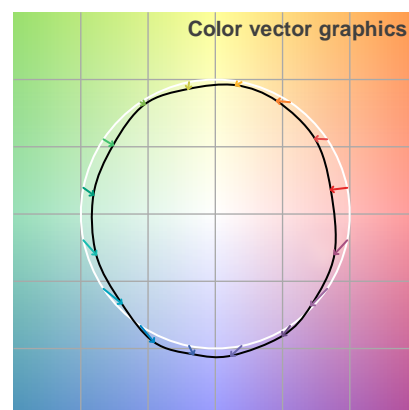
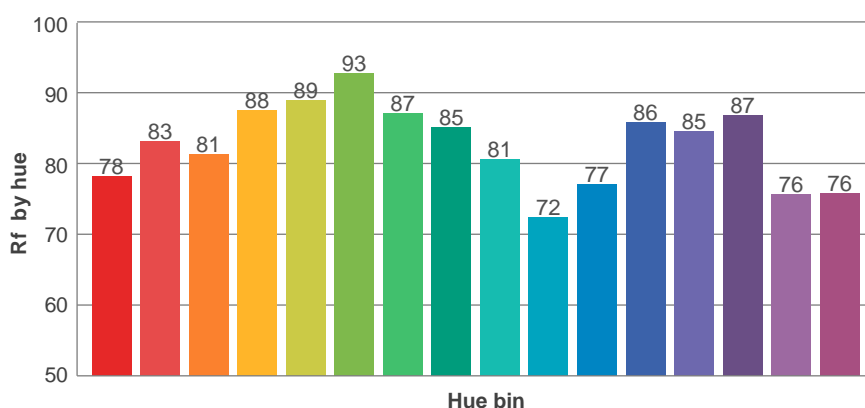
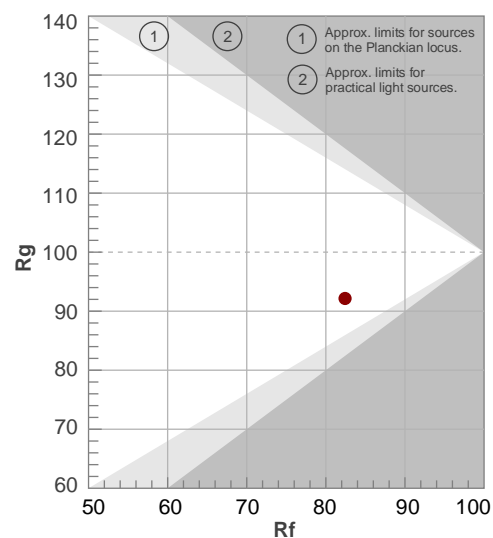
**Rf 82,4**

Fidelity index Rf

**Rg 92,2**

Gamut index Rg

Hue Bin	Ri	Shifts (%)	
		Chroma	Hue
1	78	-12%	1%
2	83	-7%	5%
3	81	-5%	9%
4	88	-3%	4%
5	89	-5%	2%
6	93	-3%	-2%
7	87	-8%	0%
8	85	-8%	4%
9	81	-7%	12%
10	72	-5%	17%
11	77	5%	15%
12	86	5%	4%
13	85	6%	-9%
14	87	3%	-9%
15	76	-3%	-17%
16	76	-7%	-12%



Avaliação todas as amostras de cores

**Glare Evaluation According to UGR**

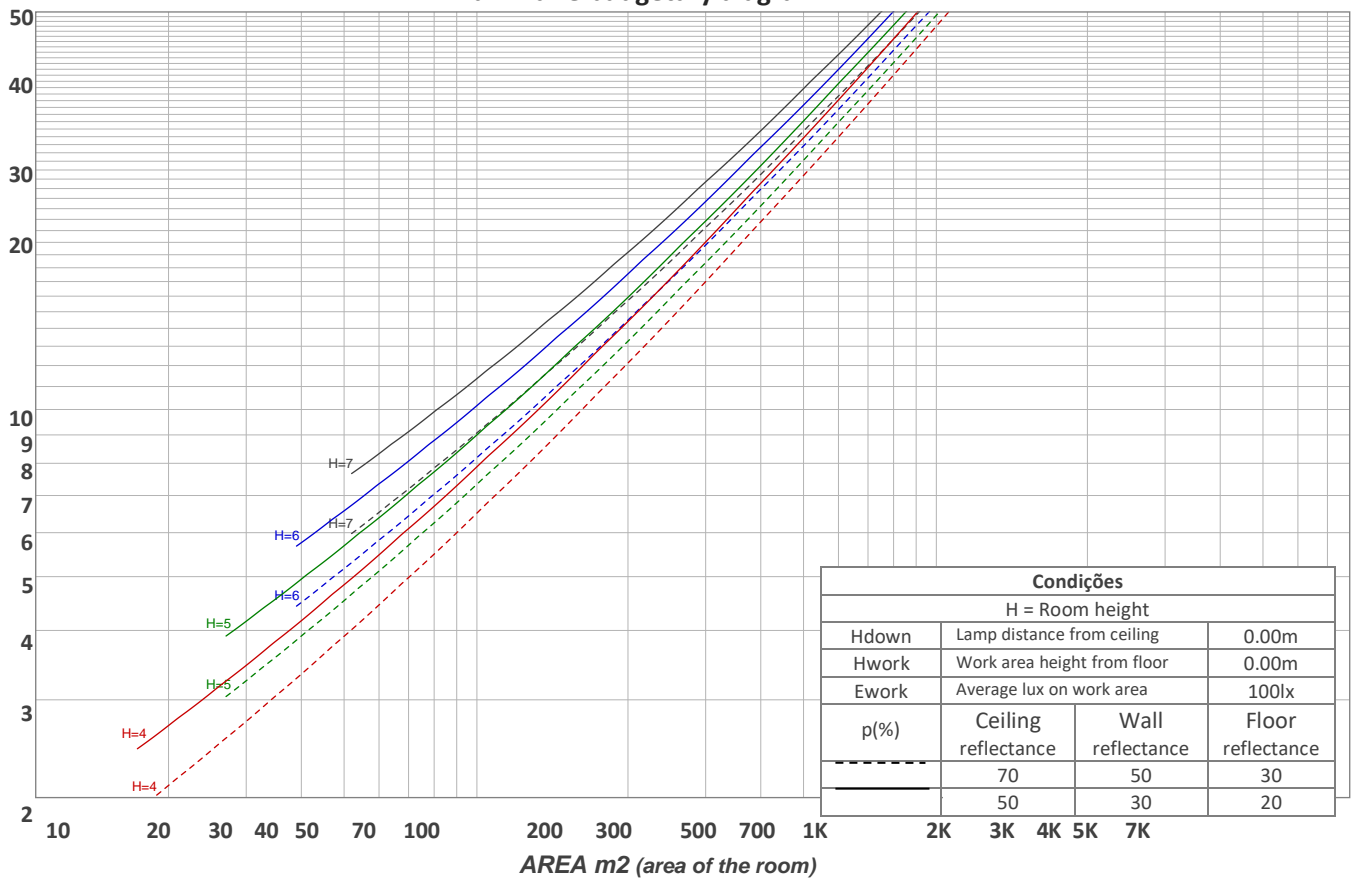
p Ceiling		70	70	50	50	30	70	70	50	50	30
p Walls		50	30	50	30	30	50	30	50	30	30
p Floor		20	20	20	20	20	20	20	20	20	20
Room size X      Y		Viewing direction at right angles to lamp axis					Viewing direction parallel to lamp axis				
2H	2H	23,6	24,7	23,8	25,0	25,3	23,2	24,4	23,4	24,7	24,9
	3H	24,9	26,1	25,3	26,4	26,6	24,5	25,7	24,9	26,0	26,2
	4H	25,4	26,5	25,8	26,8	27,1	25,0	26,2	25,4	26,5	26,7
	6H	25,8	26,8	26,1	27,1	27,5	25,5	26,5	25,8	26,7	27,1
	8H	25,8	26,8	26,2	27,1	27,5	25,5	26,5	25,9	26,8	27,3
	12H	25,8	26,8	26,2	27,1	27,6	25,6	26,5	25,9	26,9	27,3
4H	2H	24,1	25,2	24,5	25,5	25,8	23,8	24,9	24,2	25,2	25,5
	3H	25,7	26,6	26,1	27,0	27,5	25,4	26,3	25,8	26,7	27,1
	4H	26,2	27,1	26,7	27,6	28,1	25,9	26,8	26,4	27,3	27,8
	6H	26,7	27,5	27,2	27,9	28,3	26,4	27,3	26,9	27,6	28,0
	8H	26,8	27,5	27,3	27,9	28,3	26,6	27,3	27,1	27,7	28,1
	12H	26,8	27,4	27,3	27,9	28,4	26,6	27,3	27,1	27,7	28,2
8H	4H	26,5	27,2	27,0	27,6	28,0	26,2	27,0	26,7	27,3	27,7
	6H	27,0	27,6	27,5	28,1	28,6	26,8	27,4	27,3	27,9	28,4
	8H	27,2	27,7	27,7	28,2	28,9	27,0	27,5	27,6	28,1	28,7
	12H	27,3	27,7	27,9	28,2	28,8	27,1	27,6	27,7	28,1	28,7
12H	4H	26,5	27,1	27,0	27,5	28,0	26,2	26,8	26,7	27,3	27,8
	6H	27,1	27,6	27,6	28,1	28,8	26,9	27,4	27,4	27,9	28,5
	8H	27,3	27,7	27,8	28,2	28,8	27,1	27,5	27,7	28,0	28,6
Variation of the observer position for the luminaire distance S											
S = 1.0H	0,1 / -0,1					0,1 / -0,1					
S = 1.5H	0,2 / -0,3					0,2 / -0,3					
S = 2.0H	0,5 / -0,6					0,5 / -0,7					
Standard table	n/a					n/a					
Correction summand	n/a					n/a					
Corrected glare indices referring to 2210 lm total luminous flux											

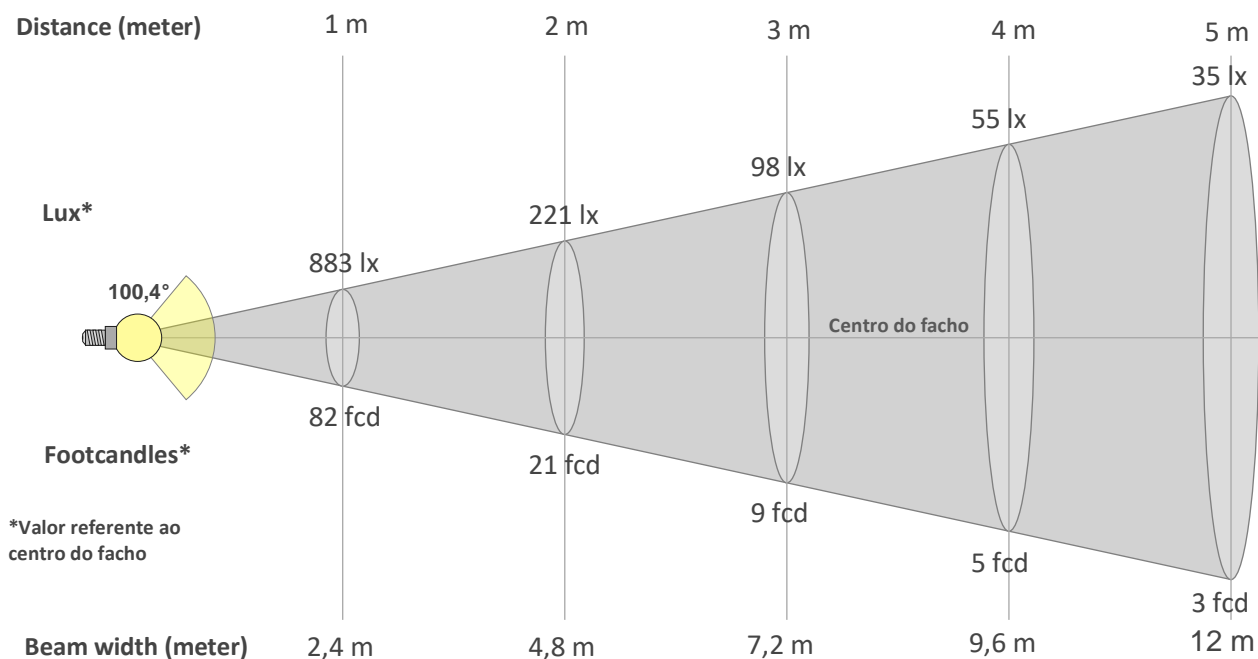
**Coeficiente de utilização**

Ceiling reflectance	80				70				50			30			10			0
Wall reflectance	70	50	30	10	70	50	30	10	50	30	10	50	30	10	50	30	10	0
Floor reflectance	20	20	20	20	20	20	20	20	20	20	20	20	20	20	20	20	20	0
RCR	(RCR: Room Cavity Ratio) Room Values are expressed as percentage of Lumens delivered to the task surface																	
0	119	119	119	119	116	116	116	116	111	111	111	106	106	106	101	101	101	99
1	109	104	100	96	106	102	98	95	98	95	92	94	91	89	90	88	86	84
2	99	91	84	79	97	89	83	78	86	80	76	82	78	74	79	75	72	70
3	90	80	72	66	88	78	71	65	75	69	64	73	67	63	70	65	61	59
4	83	71	62	56	81	70	61	55	67	60	54	65	59	54	62	57	53	51
5	76	63	55	48	74	62	54	48	60	53	47	58	52	46	56	50	46	44
6	70	57	48	42	68	56	48	42	54	47	41	53	46	41	51	45	40	38
7	65	52	43	37	64	51	43	37	49	42	37	48	41	36	47	41	36	34
8	61	47	39	33	59	47	39	33	45	38	33	44	37	32	43	37	32	30
9	57	43	35	30	55	43	35	30	42	34	29	41	34	29	39	33	29	27
10	53	40	32	27	52	40	32	27	39	32	27	38	31	27	37	31	26	25

**Quantidade de luminárias**

**Luminaire budgetary diagram**





### Beam intensities from 1-20m

1m	2m	3m	4m	5m	6m	7m	8m	9m	10m	11m	12m	13m	14m	15m	16m	17m	18m	19m	20m
3,3ft	6,6ft	9,8ft	13,1ft	16,4ft	19,7ft	23ft	26,2ft	29,5ft	32,8ft	36,1ft	39,4ft	42,7ft	45,9ft	49,2ft	52,5ft	55,8ft	59,1ft	62,3ft	65,6ft
883lx	221lx	98lx	55lx	35lx	25lx	18lx	14lx	11lx	9lx	7lx	6lx	5lx	5lx	4lx	3lx	3lx	3lx	2lx	2lx
82fcd	20,5fcd	9,1fcd	5,1fcd	3,3fcd	2,3fcd	1,7fcd	1,3fcd	1fcd	0,8fcd	0,7fcd	0,6fcd	0,5fcd	0,4fcd	0,4fcd	0,3fcd	0,3fcd	0,3fcd	0,2fcd	0,2fcd

### Intensities in 0° c-plane

0°	5°	10°	15°	20°	25°	30°	35°	40°	45°	50°	55°	60°	65°	70°	75°	80°	85°	90°	95°
883	876	860	834	799	755	705	648	588	525	460	394	327	259	192	126	66	20	2	1
100%	99%	97%	94%	90%	86%	80%	73%	67%	59%	52%	45%	37%	29%	22%	14%	7%	2%	0%	0%

### Intensities in 90° c-plane

0°	5°	10°	15°	20°	25°	30°	35°	40°	45°	50°	55°	60°	65°	70°	75°	80°	85°	90°	95°
883	877	858	827	785	736	680	620	557	493	429	365	302	240	179	122	70	25	2	1
100%	99%	97%	94%	89%	83%	77%	70%	63%	56%	49%	41%	34%	27%	20%	14%	8%	3%	0%	0%

### Intensities in 180° c-plane

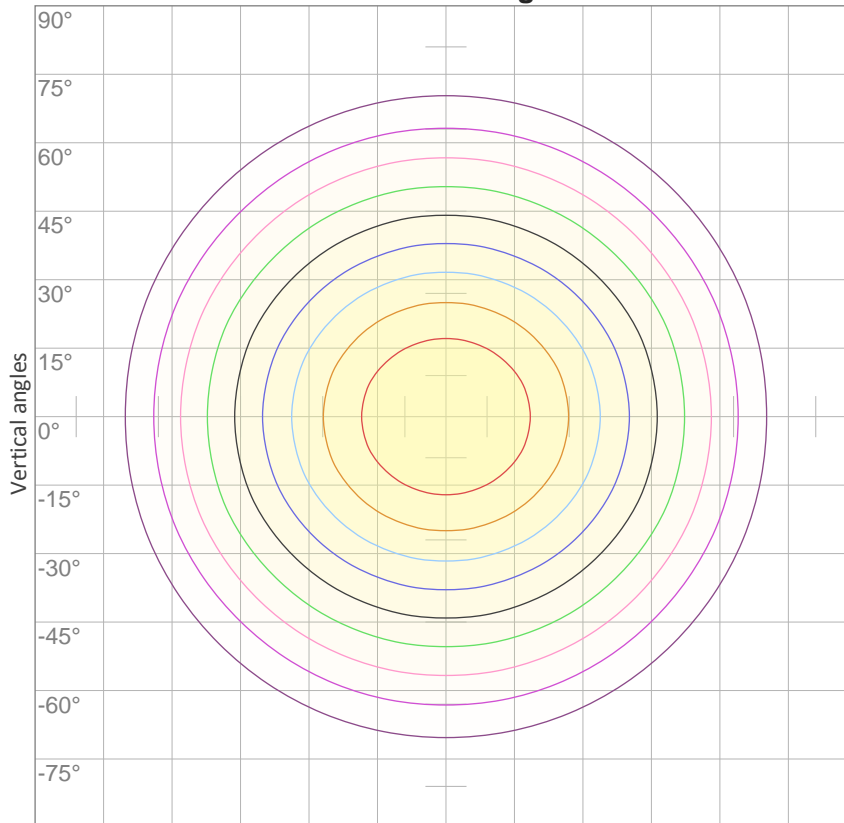
0°	5°	10°	15°	20°	25°	30°	35°	40°	45°	50°	55°	60°	65°	70°	75°	80°	85°	90°	95°
883	876	860	834	799	755	705	648	588	525	460	394	327	259	192	126	66	20	2	1
100%	99%	97%	94%	90%	86%	80%	73%	67%	59%	52%	45%	37%	29%	22%	14%	7%	2%	0%	0%

### Intensities in 270° c-plane

0°	5°	10°	15°	20°	25°	30°	35°	40°	45°	50°	55°	60°	65°	70°	75°	80°	85°	90°	95°
883	877	858	827	785	736	680	620	557	493	429	365	302	240	179	122	70	25	2	1
100%	99%	97%	94%	89%	83%	77%	70%	63%	56%	49%	41%	34%	27%	20%	14%	8%	3%	0%	0%

Beam angle 50%	Field angle 10%	Cutoff angle 2,5%	Intensity ratio in 120° cone	Intensity ratio in 90° cone
100,4°	156,2°	170,3°	79,3%	55,0%

iso-candela diagram



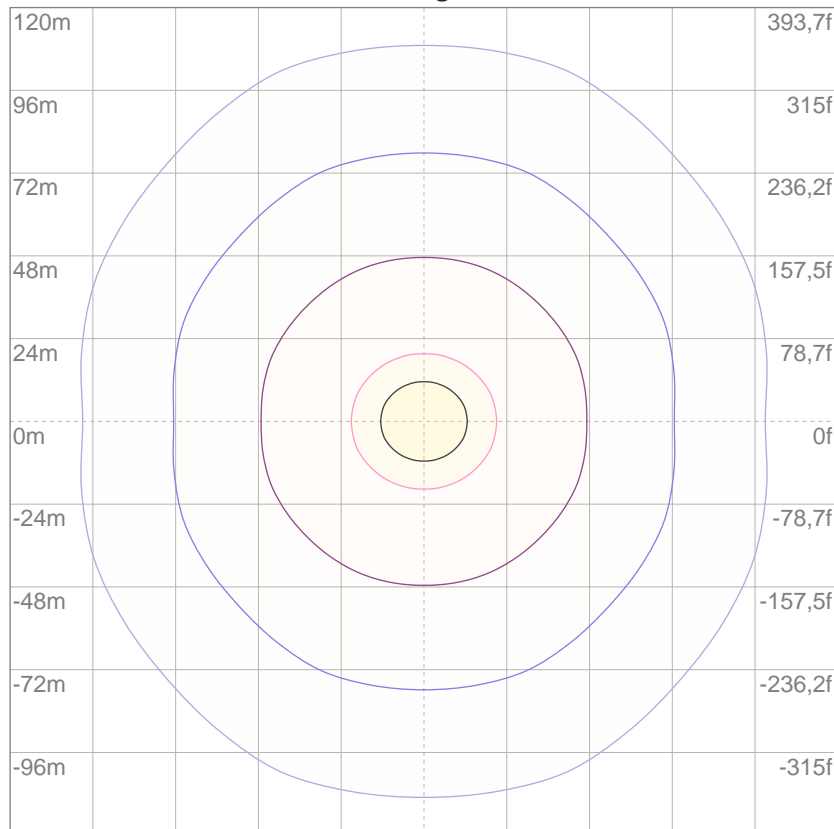
10%	88 cd
20%	177 cd
30%	265 cd
40%	353 cd
50%	441 cd
60%	530 cd
70%	618 cd
80%	706 cd
90%	795 cd

Conditions:

Number of c-planes: 16

Candela at center: 883 cd

iso-lux diagram



3%	0,265 lx
5%	0,441 lx
10%	0,883 lx
30%	2,65 lx
50%	4,41 lx

Conditions:

Number of c-planes: 16

Lux at center: 8,83 lx

*Lux distribution on a surface when lamp is mounted at 10 meters from the surface.*

**Potência**


**Vttagem: 238 V**  
**Corrente: 0,092 A**  
**Frequência: 0 Hz**  
**FP: 0,56**

**THD**



**THD corrente: n/a**  
**THD tensão: n/a**